



"Your Complete Source for Springboard and Platform Diving Equipment and Supplies"

Shipping Instructions for Duraflex and Maxiflex Diving Boards

Please note that neither Springboards and More nor Duraflex International Corporation shall be responsible for any inbound freight damage that occurs when shipping your diving board back to the Factory for refinish. Therefore, we strongly advise obtaining insurance on your shipment.

Diving boards can be seriously damaged during shipment.

1. Record the Serial Number of the Diving Board and remove the hinges from the board.
2. It is important that you protect the diving board from freight damage. A freight company may refuse your freight if it is not properly packaged.
3. It is a good idea to ask the freight company you choose to ship back your diving board to the Duraflex Factory if they have any specific packing requirements. You do not want a freight damage claim denied due to "insufficient packaging".
4. Do **not** wrap 2 or more boards together. A single board can be lifted by two people. Forklifts are not to be used to go into truck trailers to unload diving board.

The Duraflex Factory recommends that you take clear photographs (JPEG) of the following locations of your diving board(s) prior to packaging and shipping. In the event that freight damage does occur, these photographs will be very helpful when filing your claim.

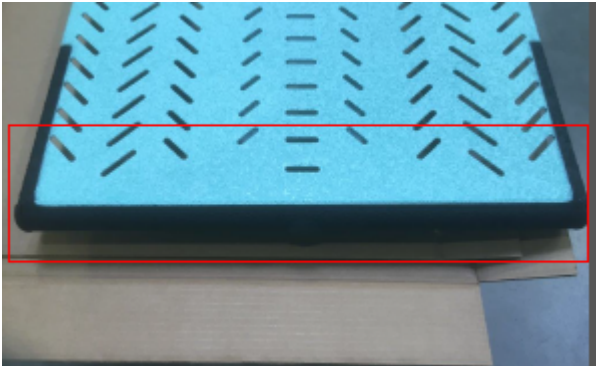
1. A straight down view of the **top** of the board, from the anchor angle end.



2. A full-frame close-up of the **anchor angle** and **anchor angle corners**.



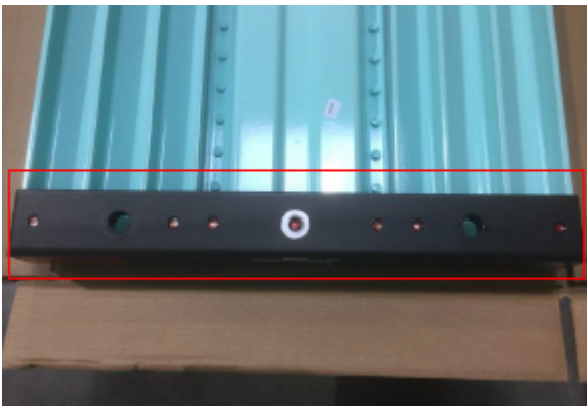
3. Full frame close ups of the **tip** of the board and **tip end corners**. Top and underneath view.



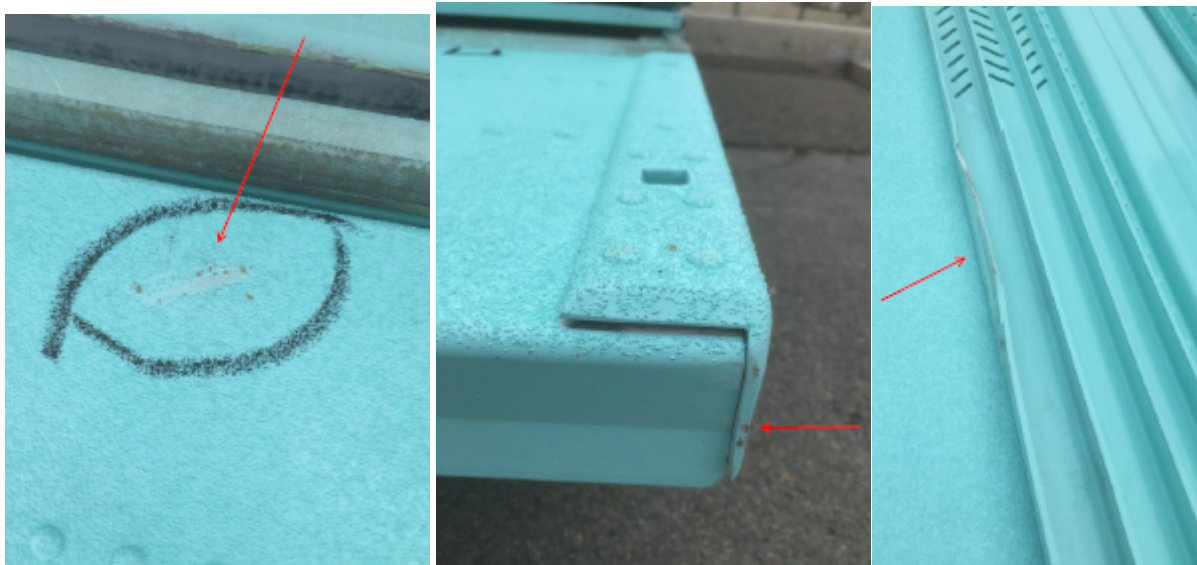
4. A straight down view of the **underneath** of the board, from the anchor angle end.



5. A full frame close up of the **anchor angle** and **bolting extrusions**, where the hinge attaches.



6. Close up photos of any cracks, gouges, dents or damage of any kind.



Please note that neither Springboards and More nor Duraflex International Corporation shall be responsible for any inbound freight damage that occurs when shipping your diving board back to the Factory for refinish. Therefore, we strongly advise obtaining insurance on your shipment – if offered by the freight carrier you select. (Sometimes they will not offer insurance for Used Equipment”)

When ready to ship your diving board back to the Duraflex Factory, please contact a local freight company in your area to arrange pick-up. Duraflex currently uses Estes Freight but you can choose whichever freight company you want.

Other nationwide freight companies are: SAIA Motor Freight; R&L Carriers; Dayton Freight; YRC Freight; UPS Freight; FedEx Freight; XPO Logistics; Roadrunner Freight and many others.

**** Please note that Duraflex does NOT accept diving board deliveries on Fridays.**

**** Remember to pack your diving board in HEAVY Cardboard that is secured with strapping tape or shrink wrap or both. Remember to check with the carrier you choose to ship your diving board if they have any specific packing requirements.**

**** Most freight companies do NOT offer insurance on used equipment so it is a good idea to ask the freight company you choose if they offer this or not.**

Please provide the following shipping information:

Ship From: Sender Name
 Sender Address
 Primary Contact
 Phone Number
 Email Address
 Freight Ready Time and Close Time

Ship To: Duraflex International
 160 Wunotoo Road
 Sparks, NV. 89434
 775-343-0115 (Phone)

Product: Diving Board – NMFC Code 14109

For 16' Duraflex or Maxiflex Diving Boards:

196" x 22" x 4" 145 LBS

For 14' Duraflex Diving Boards:

171" x 22" x 4" 140 LBS